



THE CHAMBER OF COMMERCE

Welcomes You to **ATHENS, ALABAMA**



Athens College, built in 1822 (135 years old)



Limestone County Courthouse

Athens, Alabama, was incorporated November 19, 1818, shortly before Alabama was admitted to the Union. It is located in the heart of the Tennessee Valley, halfway between Nashville, Tennessee, and Birmingham, Alabama. The city area has approximately 15,000 population. There are three private kindergarten schools; a modern public school system; 135-year-old Athens College, an accredited four-year co-educational institution operated by the Methodist Church with nearly 500 students; and, Athens Bible School, a 15-year-old 12-grade school operated by Church of Christ leaders with more than 400 students. There are seven other high schools in Limestone County, which has a population of 35,000, and the Tennessee Valley State Trade School with an enrollment of 600.

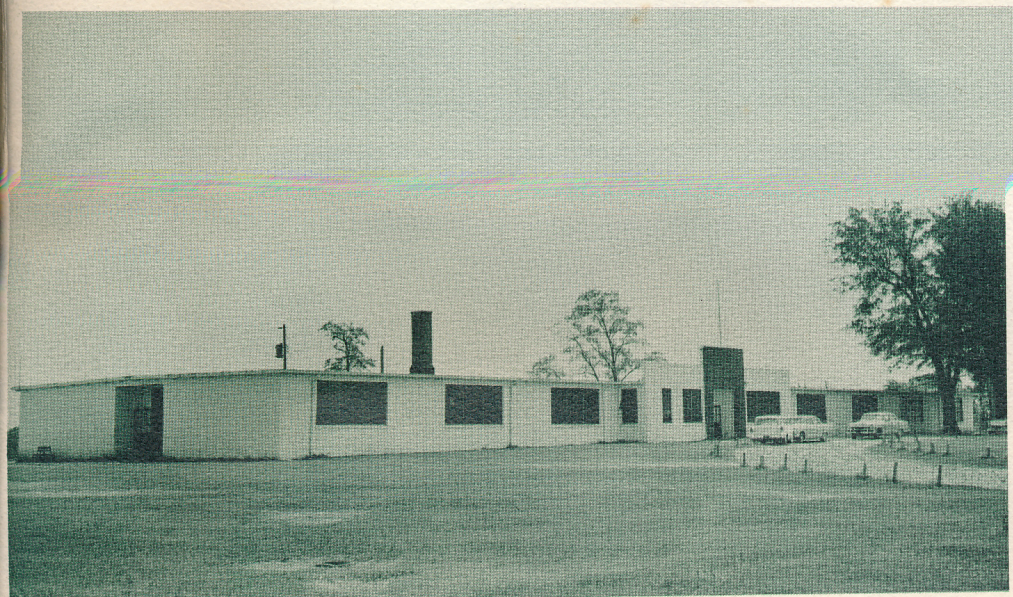
Entirely agricultural for many years, Athens is working toward a balance between farming and industry. There is still room for considerable industry before the proper balance is reached.

Limestone County is bordered on the south and west by waters from the Joe Wheeler TVA Lake. Transportation facilities are excellent with the L & N Railroad running through the center of the county and Athens; the Southern Railroad runs across the southern part of the county; navigable Tennessee River; a main North-South Highway 31; a main East-West Highway 72; numerous other paved highways leading to connections anywhere; 25 miles to Huntsville airport.

Recreational facilities abound. The city has a supervised program, including Little League Baseball, swimming, tennis, etc. A modern 5,000-capacity football stadium, and a Veterans-owned fairgrounds used solely for recreational purposes.

There are churches for many denominations, nine civic clubs, an active Chamber of Commerce, a 72-bed hospital, a library, modern municipal building, two newspapers, and a radio station. TVA electricity and Alabama-Tennessee natural gas are distributed by city-owned systems.

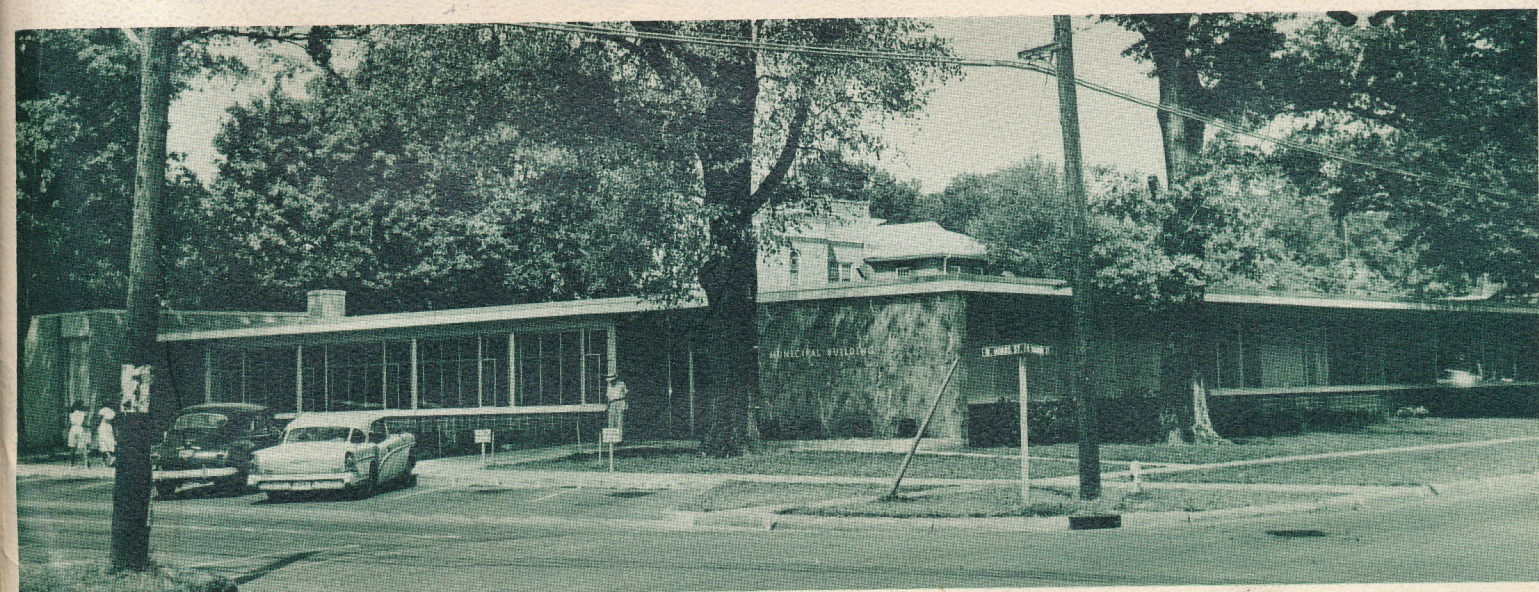
Come to see us.



Athens Bible School



The First Methodist Church



Athens Municipal Building

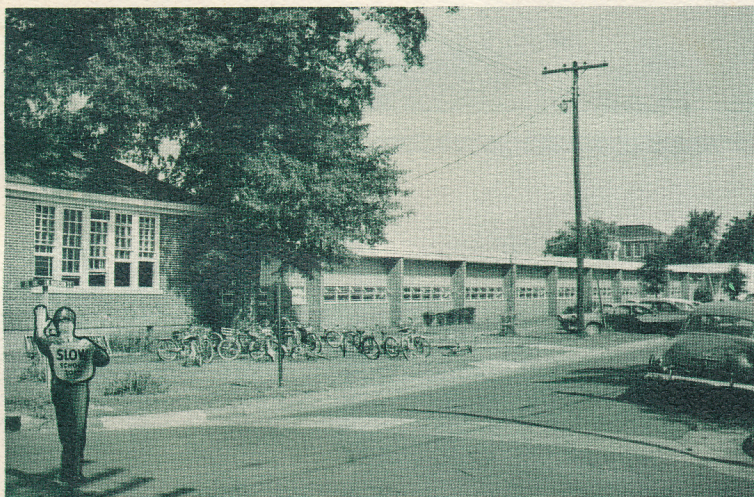
THE CHAMBER OF COMMERCE

Welcomes you
to **ATHENS, ALABAMA**

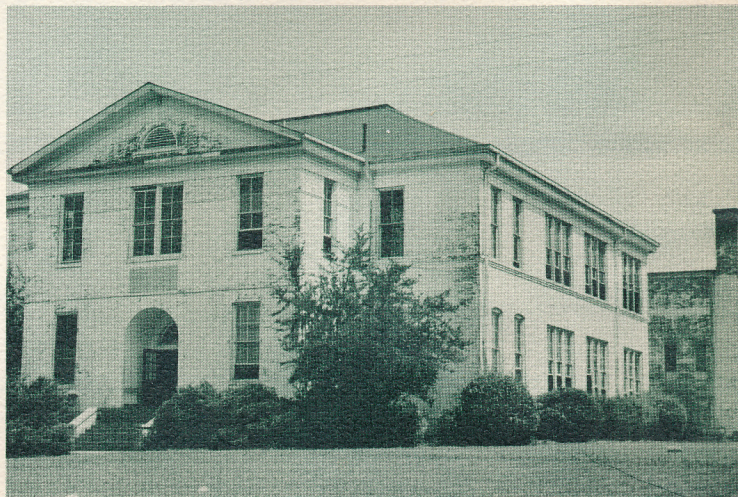


Athens United States Post Office

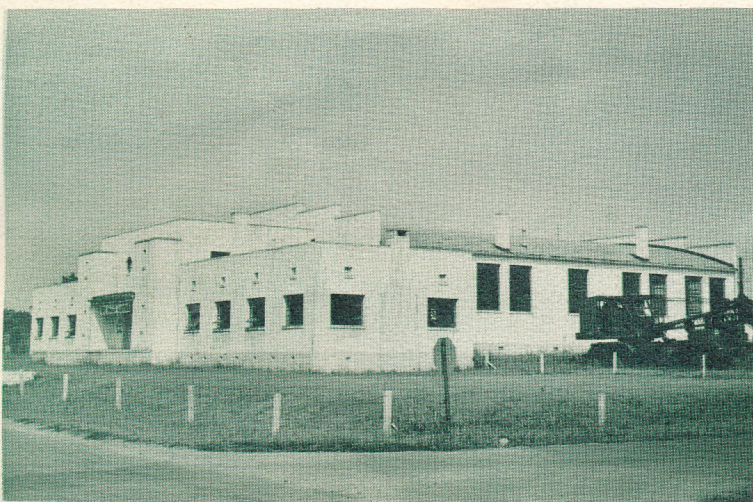
TO: _____



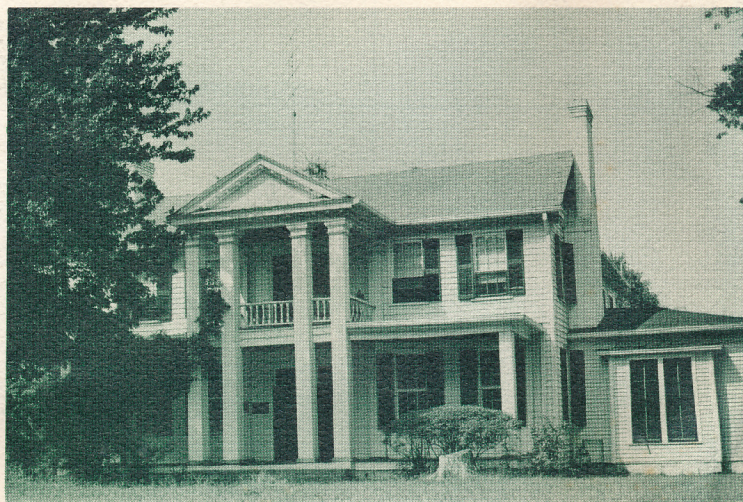
Modern Elementary School



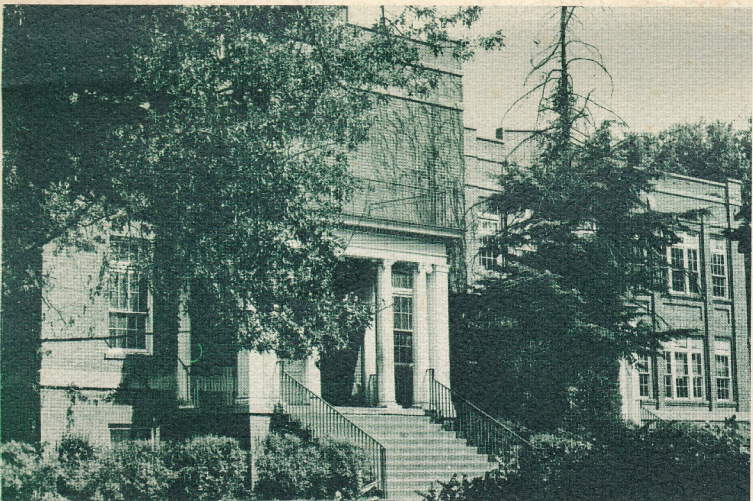
High School Building



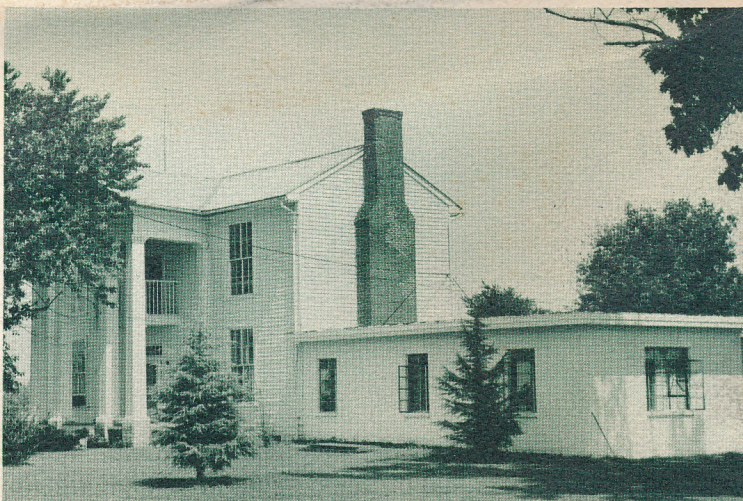
Adequately equipped Armory



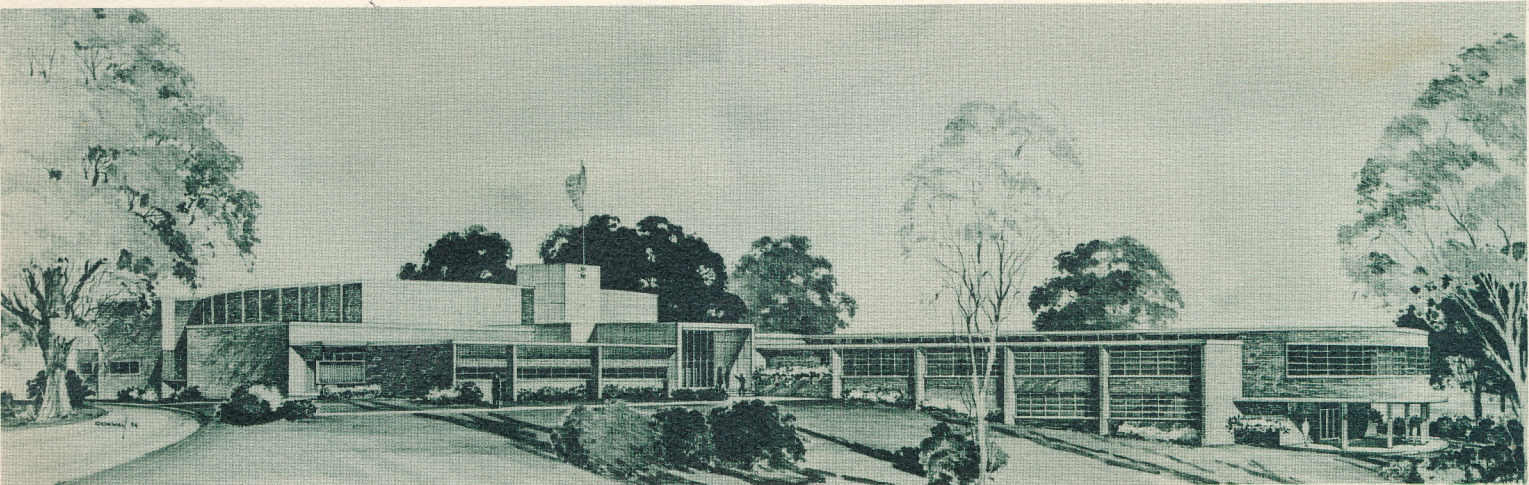
Houston Memorial Library



Trinity High School for Negroes



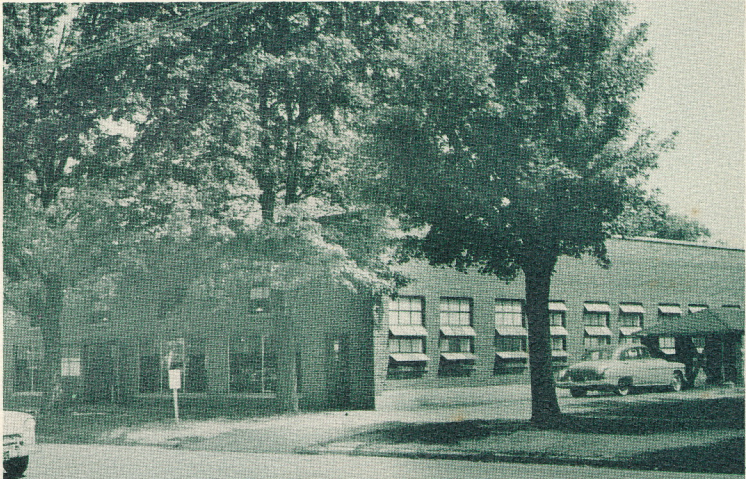
Athens Historic Colonial Country Club



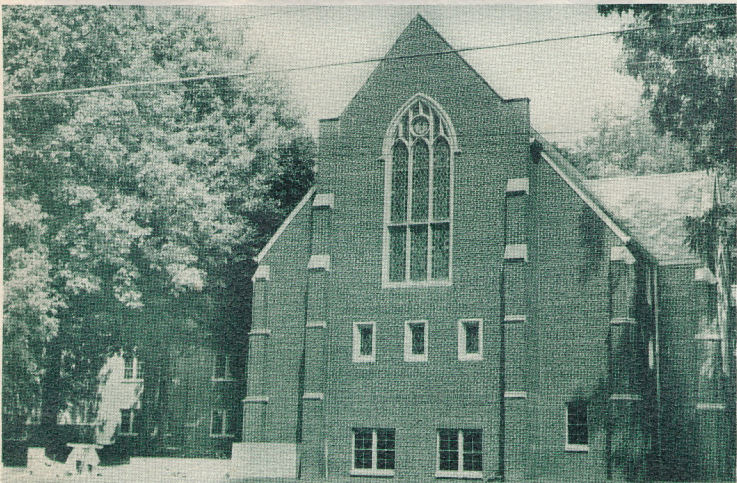
New Junior High School Building



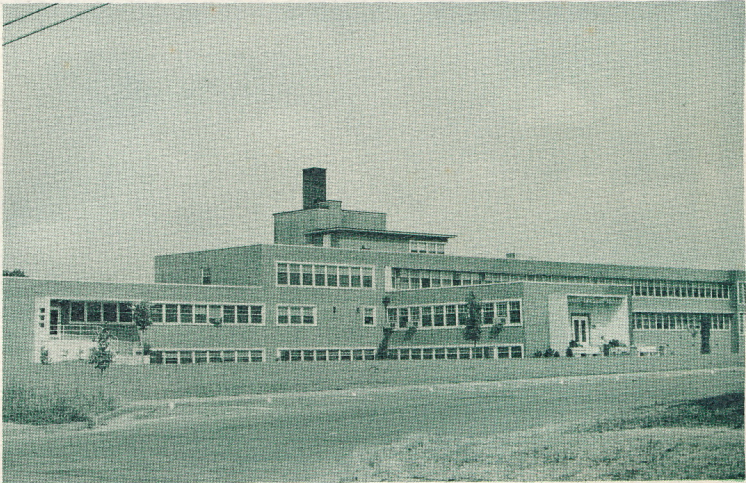
First Christian Church of Athens



Athens Garment Plant—125 Employees



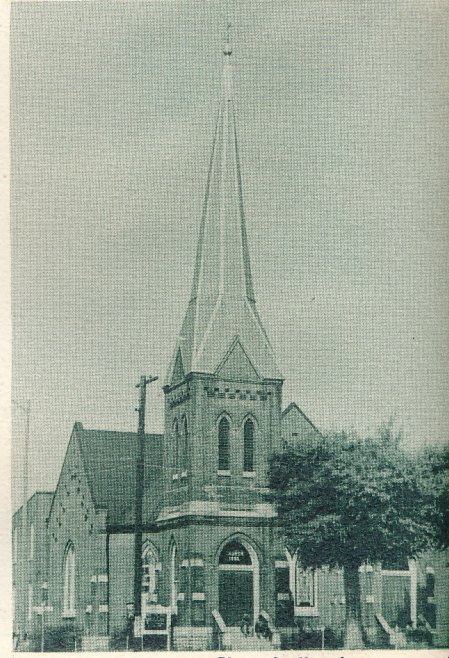
First Baptist Church



Athens-Limestone County Hospital—72 Bed



Sweet Sue Poultry Plant —150 Employees



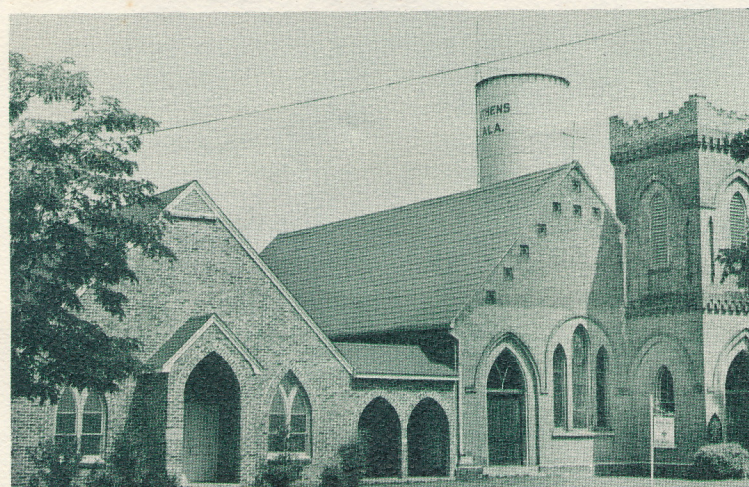
First Presbyterian Church (built in 1895)



Athens Lingerie Corporation—300 Employees



The Apostolic Christian Church



St. Timothy Episcopal Church



Athens Market Street Church of Christ